

# 320

## *Court Street*

NICOLE LIEBMAN  
212.579.7000 EXT. 117  
[nl@hudsonre.com](mailto:nl@hudsonre.com)







## PROPERTY DESCRIPTION:

**SIZE:** Ground Floor    Approx. 1,800 SF  
Lower Floor    Approx. 2,000 SF

**POSSESSION:** Immediate

**ASKING RENT:** Upon Request

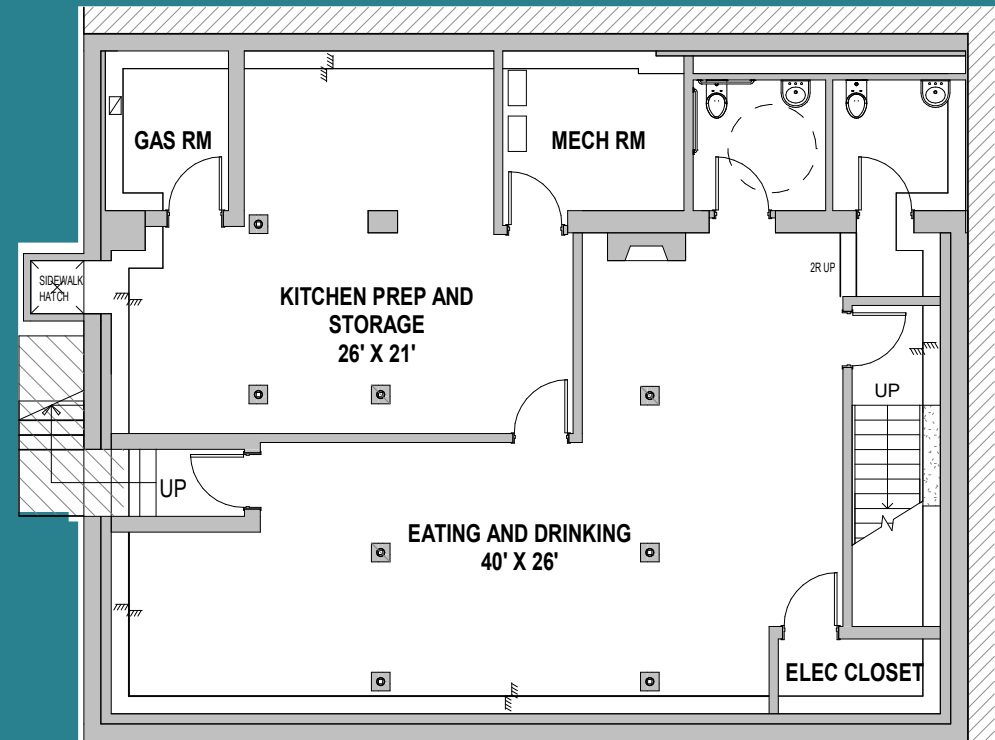
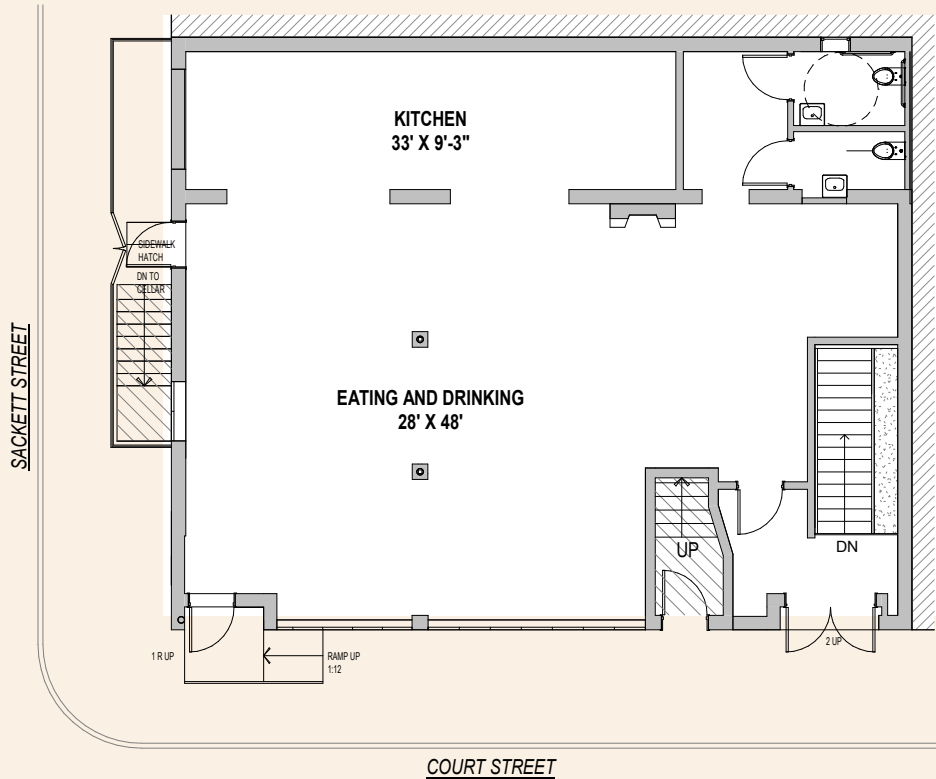
**FRONTAGE:** 50 ft. on Court St.  
40 ft. on Sackett St.

## MAJOR HIGHLIGHTS:

- Newly Renovated and White Boxed Retail or Restaurant
- Turnkey for Restaurant with Venting, Plumbing, Electric, and Gas Stubbed into the Premises
- Fully Usable Lower Selling Level with Two Means of Egress with Dedicated Entrance
- Brand New Corner Entry to Ground Floor With Ramp and Railing
- Central Heat and Split System HVAC
- Four ADA Bathrooms
- Updated T.C.O Delivered on Possession

# RESTAURANT USE

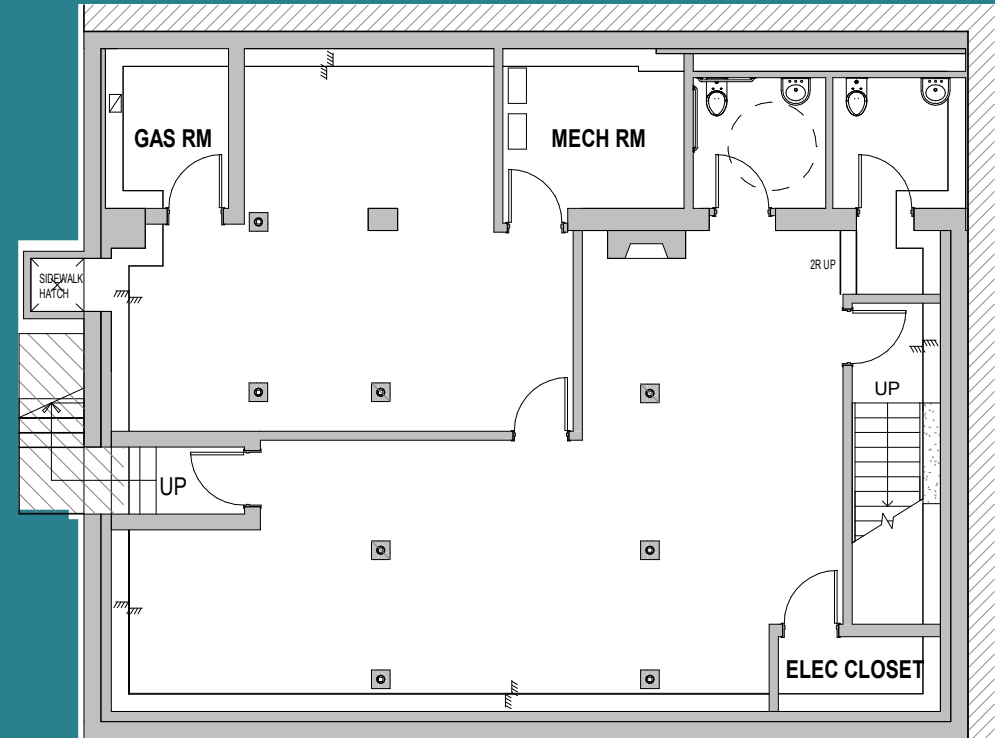
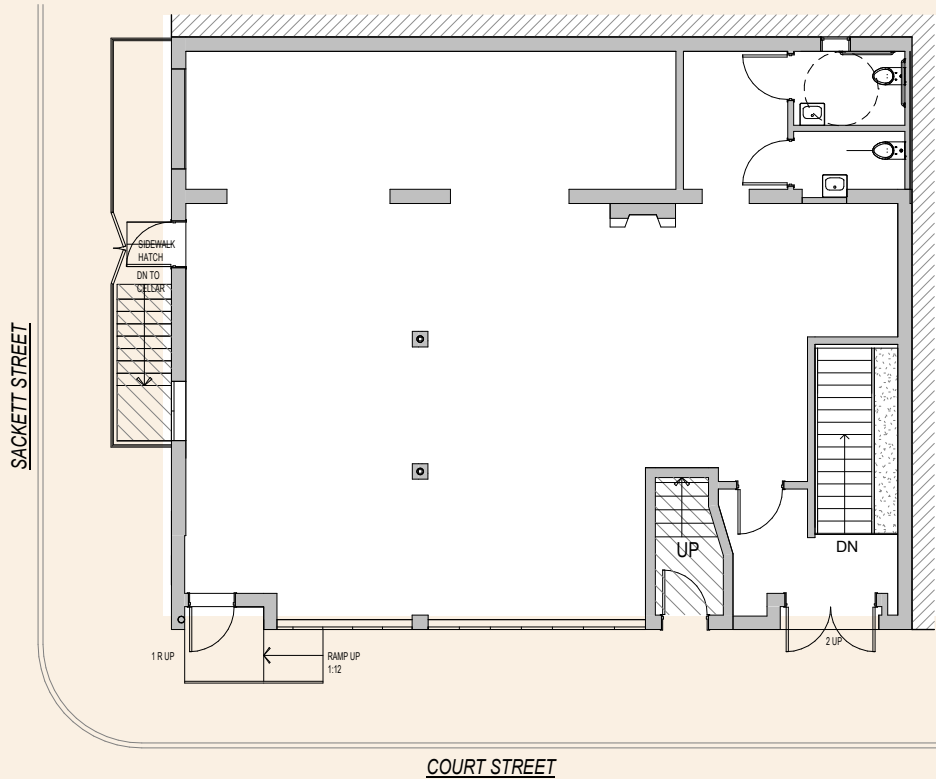
## GROUND FLOOR



## LOWER LEVEL

# DRY USE

## GROUND FLOOR



## LOWER LEVEL





# 3200

*Court Street*

NICOLE LIEBMAN  
212.579.7000 EXT. 117  
[nl@hudsonre.com](mailto:nl@hudsonre.com)

 HUDSON

