



 HUDSON



32

COURT STREET  
BROOKLYN HEIGHTS, NY

APPROXIMATELY 1,032 SF  
OF RETAIL AVAILABLE

For Further Information Please Contact:  
**Nicole Liebman**  
212.579.7000 ext. 117  
nl@hudsonre.com

25 E 21st Street, 9th Floor  
New York, NY 10010  
212.579.7000  
www.hudsonre.com

## FEATURES:

### SIZE

Lower Level - Approx. 1,032 SF

FRONTAGE ..... 35 Feet

POSSESSION ..... Immediate

ASKING RENT ..... Upon Request

USE ..... All Accepted

### IMPACTFUL NEIGHBORHOOD TENANTS

Metrotech, Equinox, Maison Kayser, SoulCycle, Neiman Marcus Last Call, Vitamin Shoppe, Hale & Hearty, Sephora, Yogaworks, It's Sugar, St. Francis College, Brooklyn Law School, Supreme Courts



# 32

COURT STREET

BROOKLYN HEIGHTS, NY

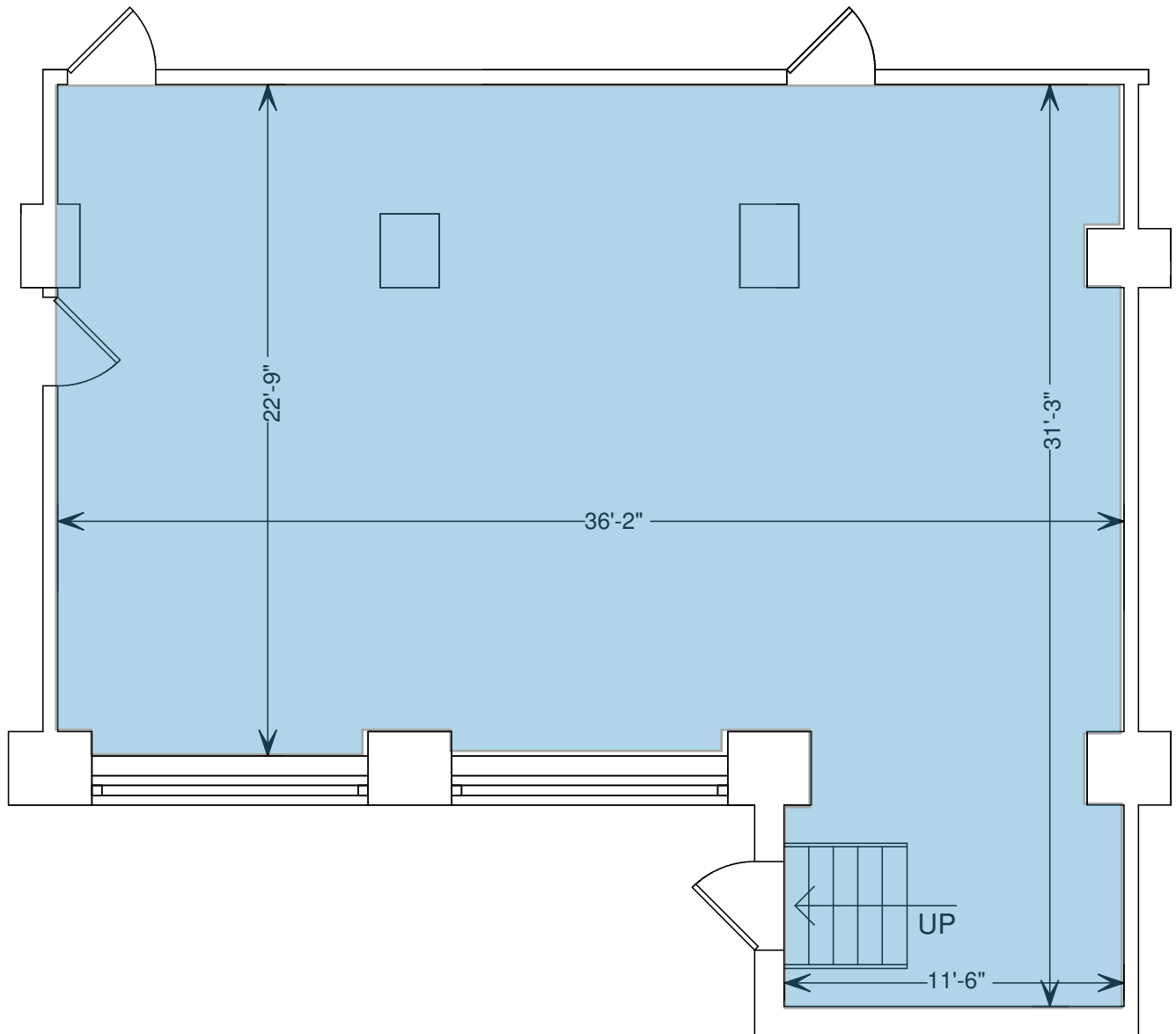
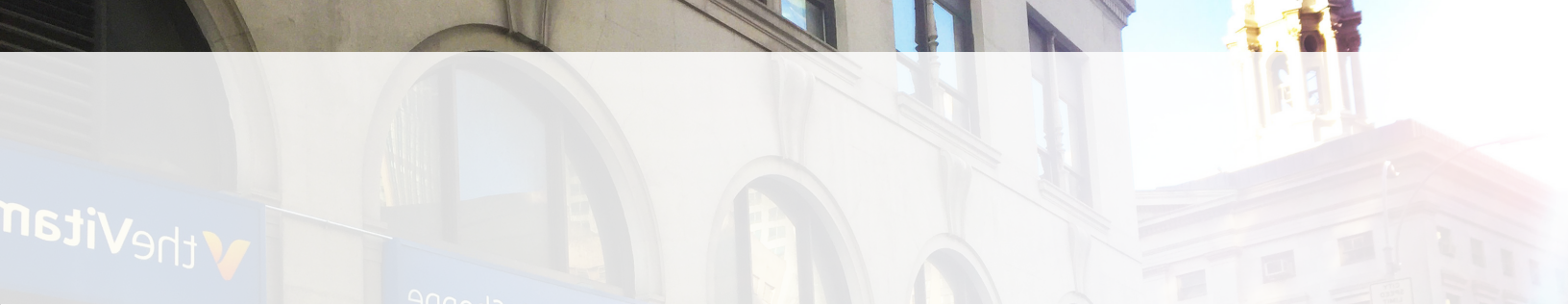


## HIGHLIGHTS:

- Newly remodeled retail space
- Highly dense neighborhood for commercial, residential, and tourist traffic
- Steps from the Supreme Court, Saint Francis College, Brooklyn Heights and multiple subway access points
- Over 6,000 new residential units coming to market in 2017

## TRANSPORTATION:

- (2,3,4,5) Borough Hall Station
- (R) Court Street Station
- (A,C,F) Jay Street MetroTech



For Further Information Please Contact:  
**Nicole Liebman**  
212.579.7000 ext. 117  
nl@hudsonre.com

 **HUDSON**  
25 E 21st Street, 9th Floor  
New York, NY 10010  
212.579.7000  
www.hudsonre.com